



Rechenkartei Addition Karte Nr. 1



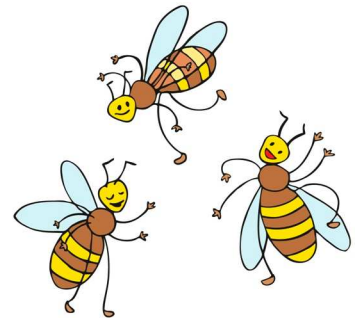
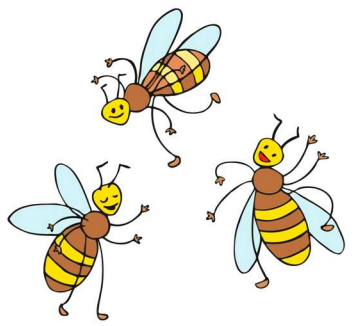
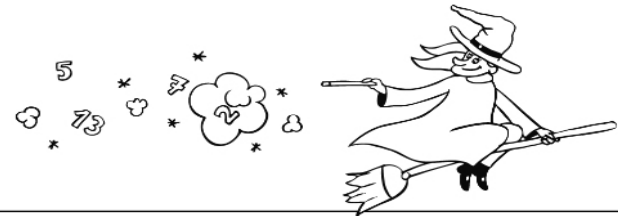
$480 + 347 = \underline{\hspace{2cm}}$	$120 + 844 = \underline{\hspace{2cm}}$
$370 + 716 = \underline{\hspace{2cm}}$	$260 + 321 = \underline{\hspace{2cm}}$
$260 + 268 = \underline{\hspace{2cm}}$	$440 + 589 = \underline{\hspace{2cm}}$
$380 + 224 = \underline{\hspace{2cm}}$	$530 + 532 = \underline{\hspace{2cm}}$
$240 + 936 = \underline{\hspace{2cm}}$	$310 + 731 = \underline{\hspace{2cm}}$
$380 + 987 = \underline{\hspace{2cm}}$	$380 + 378 = \underline{\hspace{2cm}}$
$480 + 723 = \underline{\hspace{2cm}}$	$290 + 236 = \underline{\hspace{2cm}}$
$150 + 437 = \underline{\hspace{2cm}}$	$550 + 629 = \underline{\hspace{2cm}}$
$270 + 732 = \underline{\hspace{2cm}}$	$740 + 322 = \underline{\hspace{2cm}}$
$160 + 237 = \underline{\hspace{2cm}}$	$660 + 239 = \underline{\hspace{2cm}}$
$660 + 812 = \underline{\hspace{2cm}}$	$780 + 503 = \underline{\hspace{2cm}}$
$230 + 946 = \underline{\hspace{2cm}}$	$410 + 786 = \underline{\hspace{2cm}}$



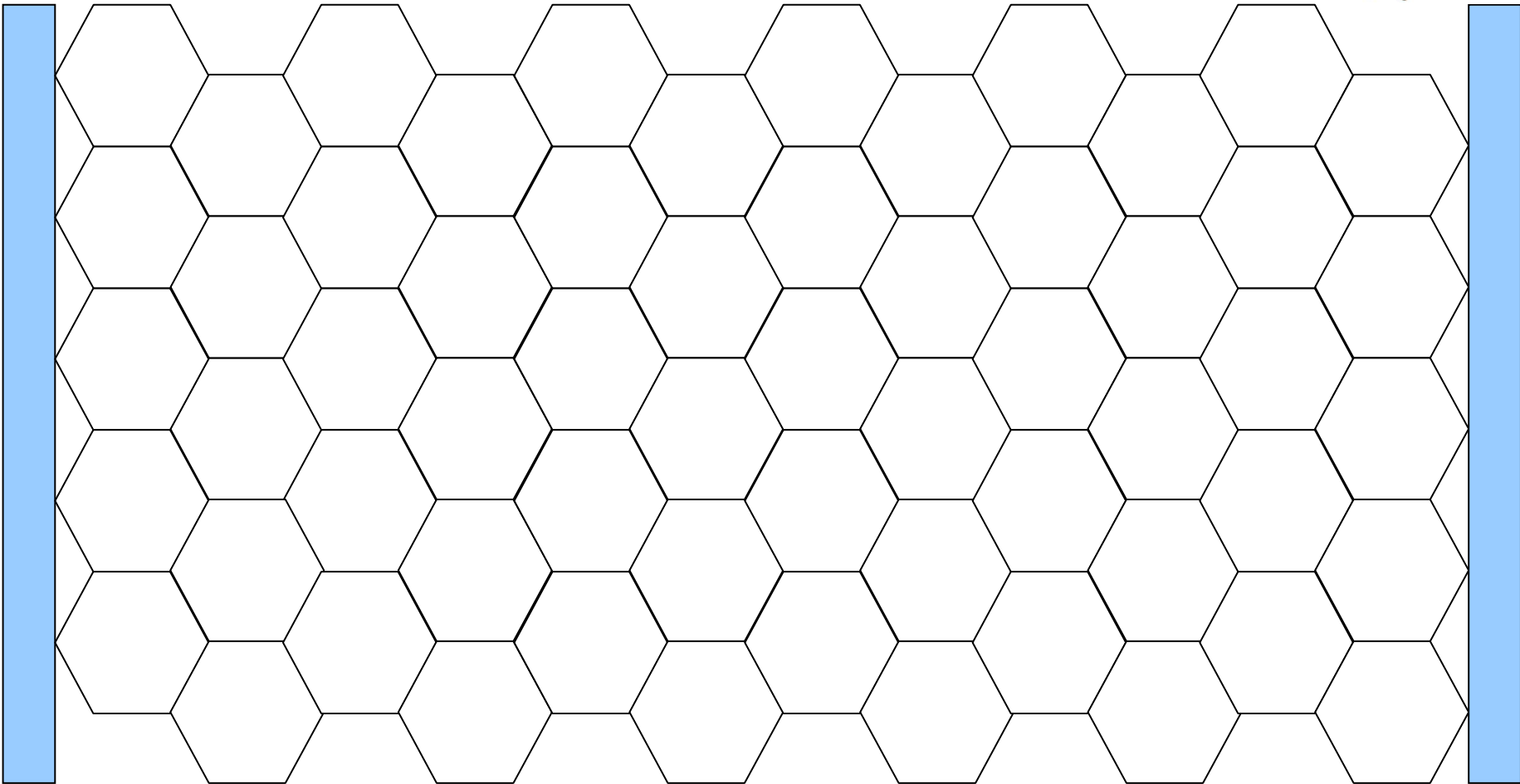
Rechenkartei Addition Lösung Karte Nr. 1

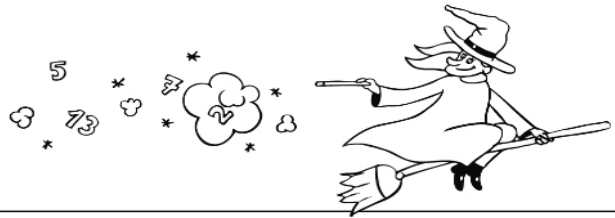


$480 + 347 = \mathbf{827}$	$120 + 844 = \mathbf{964}$
$370 + 716 = \mathbf{1086}$	$260 + 321 = \mathbf{581}$
$260 + 268 = \mathbf{528}$	$440 + 589 = \mathbf{1029}$
$380 + 224 = \mathbf{604}$	$530 + 532 = \mathbf{1062}$
$240 + 936 = \mathbf{1176}$	$310 + 731 = \mathbf{1041}$
$380 + 987 = \mathbf{1367}$	$380 + 378 = \mathbf{758}$
$480 + 723 = \mathbf{1203}$	$290 + 236 = \mathbf{526}$
$150 + 437 = \mathbf{587}$	$550 + 629 = \mathbf{1179}$
$270 + 732 = \mathbf{1002}$	$740 + 322 = \mathbf{1062}$
$160 + 237 = \mathbf{397}$	$660 + 239 = \mathbf{899}$
$660 + 812 = \mathbf{1472}$	$780 + 503 = \mathbf{1283}$
$230 + 946 = \mathbf{1176}$	$410 + 786 = \mathbf{1196}$



Tanz der Bienen





Tanz der Bienen

$11 \cdot 30 =$



$8 \cdot 50 =$



$7 \cdot 80 =$



$9 \cdot 50 =$



$7 \cdot 30 =$



$13 \cdot 30 =$



$7 \cdot 70 =$



$2 \cdot 32 =$



$6 \cdot 70 =$



$6 \cdot 12 =$



$11 \cdot 11 =$



$13 \cdot 13 =$



$12 \cdot 12 =$



$12 \cdot 90 =$



$12 \cdot 30 =$



$6 \cdot 50 =$



$12 \cdot 40 =$



$8 \cdot 90 =$



$7 \cdot 40 =$



$4 \cdot 80 =$





Tanz der Bienen

$440 : 11 =$



$1100 : 10 =$



$360 : 90 =$



$110 : 11 =$



$99 : 33 =$



$72 : 9 =$



$162 : 2 =$



$720 : 8 =$



$200 : 4 =$



$155 : 5 =$



$560 : 7 =$



$96 : 3 =$



$500 : 5 =$



$92 : 2 =$



$135 : 3 =$



$840 : 12 =$



$300 : 25 =$



$660 : 110 =$

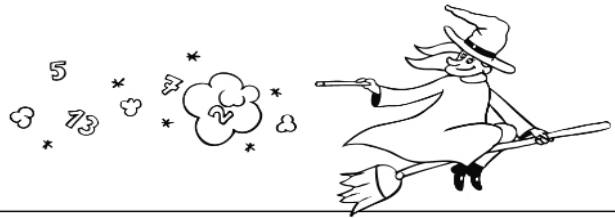


$560 : 80 =$



$540 : 9 =$





Tanz der Bienen (Lösungen)

$99 : 33 =$ 3	$360 : 90 =$ 4	$660 : 110 =$ 6	$560 : 80 =$ 7	$72 : 9 =$ 8
$110 : 11 =$ 10	$300 : 25 =$ 12	$155 : 5 =$ 31	$96 : 3 =$ 32	$440 : 11 =$ 40
$135 : 3 =$ 45	$92 : 2 =$ 46	$200 : 4 =$ 50	$540 : 9 =$ 60	$2 \cdot 32 =$ 64
$840 : 12 =$ 70	$6 \cdot 12 =$ 72	$560 : 7 =$ 80	$162 : 2 =$ 81	$720 : 8 =$ 90
$500 : 5 =$ 100	$1100 : 10 =$ 110	$11 \cdot 11 =$ 121	$12 \cdot 12 =$ 144	$13 \cdot 13 =$ 169
$7 \cdot 30 =$ 210	$7 \cdot 40 =$ 280	$6 \cdot 50 =$ 300	$4 \cdot 80 =$ 320	$11 \cdot 30 =$ 330
$12 \cdot 30 =$ 360	$13 \cdot 30 =$ 390	$8 \cdot 50 =$ 400	$6 \cdot 70 =$ 420	$9 \cdot 50 =$ 450
$12 \cdot 40 =$ 480	$7 \cdot 70 =$ 490	$7 \cdot 80 =$ 560	$8 \cdot 90 =$ 720	$12 \cdot 90 =$ 1080